

Product information presented here reflects conditions at time of publication. Consult factory regarding discrepancies or inconsistencies.



PUMP COMPANY

Zoeller Family of Water Solutions™

MAIL TO: P.O. BOX 16347 • Louisville, KY 40256-0347
 SHIP TO: 3649 Cane Run Road • Louisville, KY 40211-1961
 (502) 778-2731 • 1 (800) 928-PUMP • FAX (502) 774-3624

visit our web site:
www.zoeller.com



THE "FULL-FLOW" UNICHECKS

30-0163
30-0164

1¼" CAST IRON NPT
1½" CAST IRON NPT



30-0163
 Pictured

Outside dimensions
 5 7/16" W x 4" W x 6 1/4" H



- Vertical or horizontal installation
- Full-flow design, no restrictions
- Stops backflow of water
- Standard, 1¼", 1½", 2", 3" female NPT pipe
- Neoprene polyester reinforced flapper, smooth edge design with cast iron and noncorrosive metal backing plates & stainless steel fastener
- Corrosion-resistant powder coated epoxy finish
- Rated at 50 PSI (115 feet of head) at 130°F
- Stainless steel bolts
- 1 per carton
- Weight: 30-0163, 7.5 lbs.; 30-0164, 7.5 lbs.;
- 30-0152, 10 lbs.; 30-0160, 18 lbs.
- Suitable for installation below basin cover

30-0152
30-0160

2" CAST IRON NPT
3" CAST IRON NPT



30-0160
 Pictured

Outside dimensions
 6 5/8" W x 6 5/8" W x 8" H

30-0021
30-0151

2" PLASTIC SLIP X SLIP UNIONS
2" CAST IRON SLIP X SLIP UNIONS

- Full 2" flow design - meets BOCA (P.604.2) 2" full flow pump code
- Checks backflow of water and sewer gas
- Simple to install (no threading of pipe required). Save time & material costs
- Neoprene gasket and flapper, weighted with heavy stainless steel metal backing plates and rivet
- Can be installed on vertical or horizontal line
- Slips over PVC, steel pipe or copper piping
- Reduces motor and pump noise from plumbing system
- 6 per carton
- Flexible neoprene slip x slip union includes stainless steel clamps for low pressure systems. Avoid more than 10 ft. static head above the check valve. 4.3 PSI at 130°F
- Extra wide hinge to reduce hinge stress
- Plastic check has PVC body and can be installed with solvent welded couplings for pressure systems to 25 PSI, 57 ft. of head (P/N 30-0023)
- Model 30-0151 has corrosion-resistant powder coated epoxy finish.
- Plastic check individual rack pack Model 30-0022



30-0151
 Cast Iron



30-0021
 Pvc Plastic

Consult Factory or local representative for state approvals

30-0181
30-0200

1¼" - 1½" SLIP X SLIP UNION
1¼" - 1½" SLIP X SLIP UNION W/ SS SCREW & CLAMPS

- Flapper bends over a radius, no sharp 90° edges — lengthens life of flapper hinge
- PVC plastic check body, ultrasonically welded and can be solvent welded for rigid pressure rated piping systems to 25 PSI, 57 ft. of head at 130°F (30-0182)
- Slip x slip for 4.3 PSI, 10 ft. of head at 130°F. Avoid more than 10 ft. static head above the check valve.
- Vertical or horizontal installation
- Available in individual packages for pegboard display (30-0181)
- All stainless steel screws, nuts and clamps on model 30-0200 only
- Stainless steel clamps with zinc screws on model 30-0181 only
- Designed to reduce water hammer
- 10 per carton



30-0181
 Pictured



30-0200
 Pictured

HIGH-TEMPERATURE "FULL-FLOW" UNICHECKS

- 30-0214** 1¼" CAST IRON NPT
- 30-0215** 1½" CAST IRON NPT
- 30-0216** 2" CAST IRON NPT



30-0214
Pictured

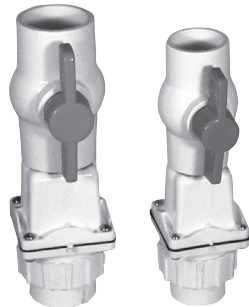


- Use with 2000 & 3000 series high-temperature pumps
- Vertical or horizontal installation
- Full-flow design, no restrictions
- Stops backflow of water
- Standard, 1¼", 1½", 2" female NPT pipe
- EPDM strand-reinforced flapper, smooth-edge design, with cast iron and noncorrosive metal backing plates & stainless steel fastener.
- Corrosion-resistant powder coated epoxy finish
- Rated at 50 PSI (115 feet of head) at 200°F
- Stainless steel bolts
- 1 per carton
- Weight: 30-0214, 7.5 lbs.; 30-0215, 7.5 lbs.; 30-0216, 10 lbs.

Tri-Check®

- 30-0100**
1½" PVC CHECK VALVE / BALL VALVE UNION COMBINATION

- 30-0101**
2" PVC CHECK VALVE / BALL VALVE UNION COMBINATION



30-0101
Pictured

30-0100
Pictured

- Full-flow check valve design
- Threaded union allows pump to be removed without disrupting discharge piping.
- Saves time and money - easy to install
- Neoprene gasket and flapper, weighted with stainless steel backing plates and rivet
- Can be installed on vertical or horizontal pipe
- Meets plumbing codes requiring a ball valve installed in conjunction with a check valve.*

The "Combo"

- 30-0102**
1½" PVC CHECK VALVE UNION COMBINATION

- 30-0103**
2" PVC CHECK VALVE UNION COMBINATION



30-0103
Pictured

30-0102
Pictured

- All stainless steel screws
- Replaceable flapper in the check valve
- Extra wide hinge to reduce stress
- Rated for 25 psi, 58 ft. of head
- 6 Per carton (30-0100 & 30-0101)
- 9 Per carton (30-0102 & 30-0103)

*Consult Factory or local representative for state approvals

INLINE CHECK VALVE

- 30-0238** 1½" INLINE CHECK VALVE

- Rubber coupling with stainless steel clamps
- Threads into pump discharge
- Pre-drilled weephole
- 4.3 PSI, 10 ft. of Head
- Vertical installation only



30-0238
Pictured



PUMP COMPANY

MAIL TO: P.O. BOX 16347 • Louisville, KY 40256-0347
SHIP TO: 3649 Cane Run Road • Louisville, KY 40211-1961
(502) 778-2731 • 1 (800) 928-PUMP • FAX (502) 774-3624

Your Peace of Mind is Our Top Priority®

visit our web site:
www.zoeller.com